

Contents

[The System Tray](#)
[The ClickSave menu](#)
[The DeskLaunch menu](#)
[Configuring ClickSave](#)
[Advanced settings](#)
[The Tray Manager](#)
[Command line options](#)
[Buying ClickSave](#)

For more help, hints and tips, frequently asked questions and information on newer releases, please take a look at the web site:

<http://www.geocities.com/SiliconValley/Haven/6200/ClickSave.html>

About ClickSave/DeskLaunch

This program combines two useful utilities, each of which possesses its own (optional) tray icon.

ClickSave lets you start your screen saver using one of several different methods. It also allows you to use your system tray to launch your favourite applications and documents. DeskLaunch gives you fast access to the icons on your desktop - this is handy if you find it annoying when you have to minimize your applications to get at them.

This program is SHAREWARE. This means that although the **unregistered** version is freely distributable for evaluation purposes, if you intend to keep it, you must purchase the full version (see above). You may not distribute the licensed (registered) version.

Other features:

- Tray manager which lets you add special folders, such as the Control Panel to your tray
- Log off, shut down, or restart your machine quickly from the tray
- Log off or shut down automatically when the system is idle
- Show display properties
- Show your desktop by minimising all windows
- Browse your folders quickly
- Very low impact on your system compared with other utilities

The System Tray

Most of ClickSave's functionality is accessed from the system tray at the bottom-right of your screen. There are two (optional) icons:

ClickSave - control your screen saver and add your favourite programs and documents by dragging them onto the system tray. Right-click to access the menu, double-click to start the screen saver.

DeskLaunch - access the icons on your desktop by right-clicking this icon and selecting from the menu; double-clicking clears your applications out of the way, so you can access the desktop directly.

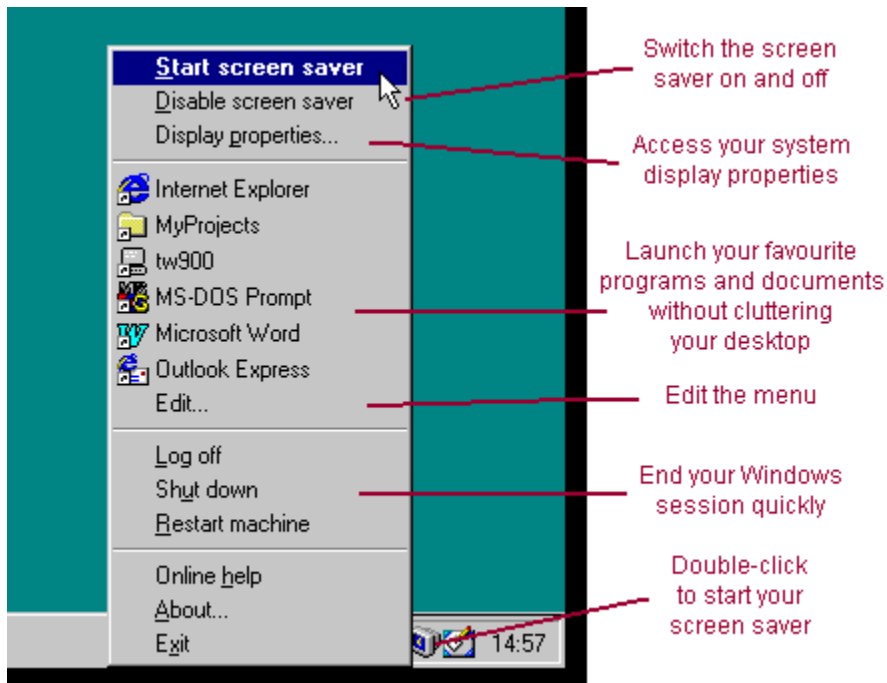
You can also opt to display the ClickSave launcher icons on the system tray, effectively turning your tray into a toolbar (see illustration) - simply drag icons onto the tray to add them.



To edit the menu items, select the edit option in the menu itself, or if you have the launcher icons on your tray, right-click to get their context menu (note that the actions refer to the shortcuts, not the objects themselves, so if you select 'delete', the icon is removed from the tray - your actual document or program is safe!) You can change the icons for shortcuts via the context menu: select **properties**, then the 'Shortcut' tab, then press the 'Change Icon...' button.

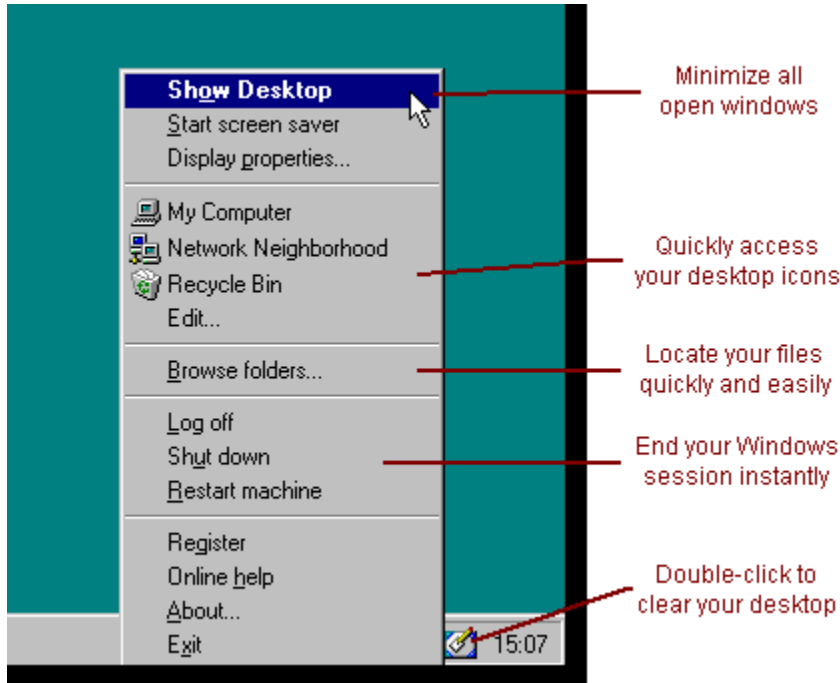
The ClickSave Menu

The menu is accessed by right-clicking the icon in the taskbar tray. You can add your own items to the menu by putting shortcuts or documents in the ClickSaveMenu folder in your Windows directory, or drag the icons from the desktop or from explorer onto the tray, or into the ClickSave settings dialog.



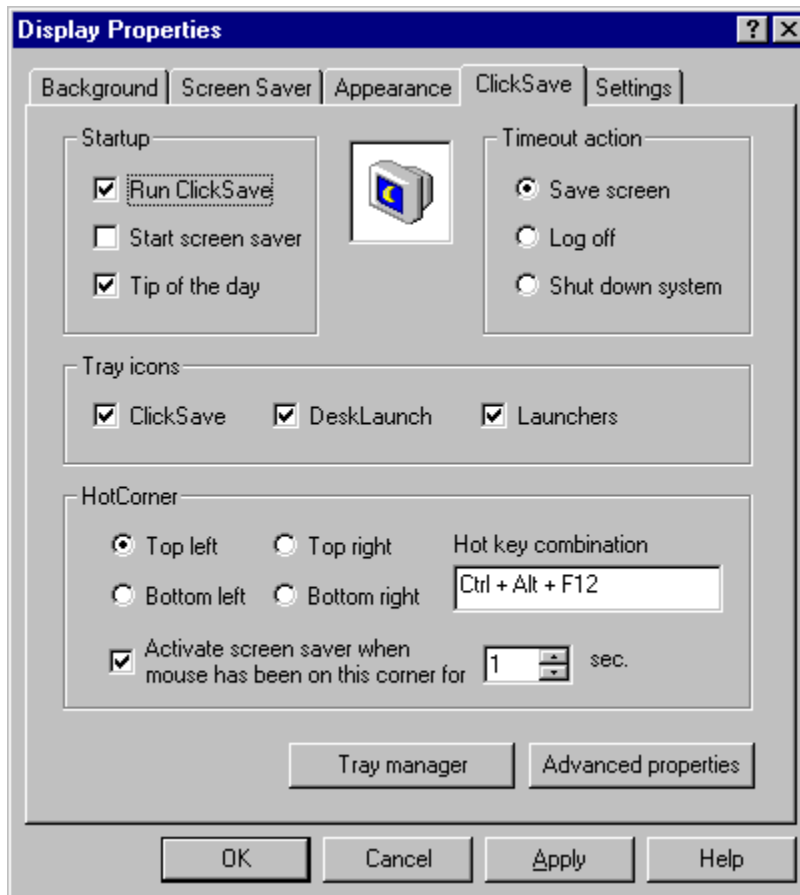
The DeskLaunch Menu

The new DeskLaunch feature gives you quick and easy access to the icons on your desktop, which can often be stuck behind the application you are currently running. Just double-click the icon to minimise all your windows, or launch the item directly from the menu. You can also browse open folders from an easy to use dialog box.



Configuring ClickSave

The settings dialog allows you to set most of ClickSave's features.



Startup

Run ClickSave - start ClickSave when you log in

Start screen saver - start screen saver when you log in

Tip of the day - show the tip of the day when you start ClickSave

Tray icons

ClickSave - access the ClickSave menu and launcher items from the taskbar

Desktop - enable the DeskLaunch icon, which allows you to access your desktop from a menu

Launchers - launch programs directly from the tray (registered version only)

Timeout action

Select the default action when the system times out (registered version only).

You can start the screen saver, as usual, log the current user out or shut down the system (privileges required under NT).

Hot key

Define a key sequence that will activate the screen saver (operational after dialog closes).

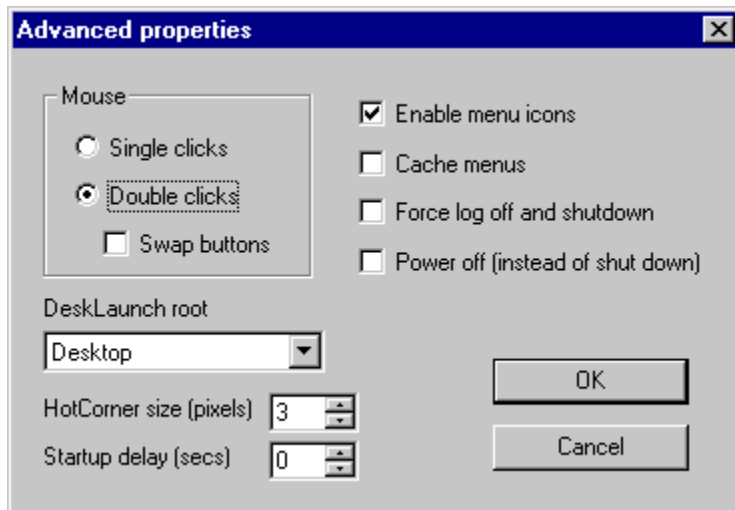
HotCorner

When the mouse pointer is left over the specified corner of the screen for the required amount of time, the

screen saver is started.

Advanced Settings

These features are available only in the registered version.



Mouse

Single clicks - tray icons execute on a single click instead of a double click

Swap buttons - when checked, left clicks activate the menus and right clicks execute the icons.

Enable menu icons

You can disable the graphics on the menus to speed up operation on slow machines. Note that this disables the launcher icons as well.

Cache menus

Do not update the menus every time you select them. This speeds up menu accesses, but can mean that sub-directories are not kept up to date.

Force log off/shut down

If you use the auto log off or shut down options, checking this item will cause applications that try to prevent Windows from exiting to be terminated. **Warning - this could lead to loss of data.**

Cache menus

Do not update the menus every time you select them. This speeds up menu accesses, but can mean that sub-directories are not kept up to date.

Power off

If your computer supports the power off feature, you can use this item to switch your machine off when it shuts down automatically.

DeskLaunch root

The DeskLaunch menu normally shows your desktop icons. You can change where it looks by selecting one of these items.

Cache menus

Do not update the menus every time you select them. This speeds up menu accesses, but can mean that sub-directories are not kept up to date.

HotCorner size

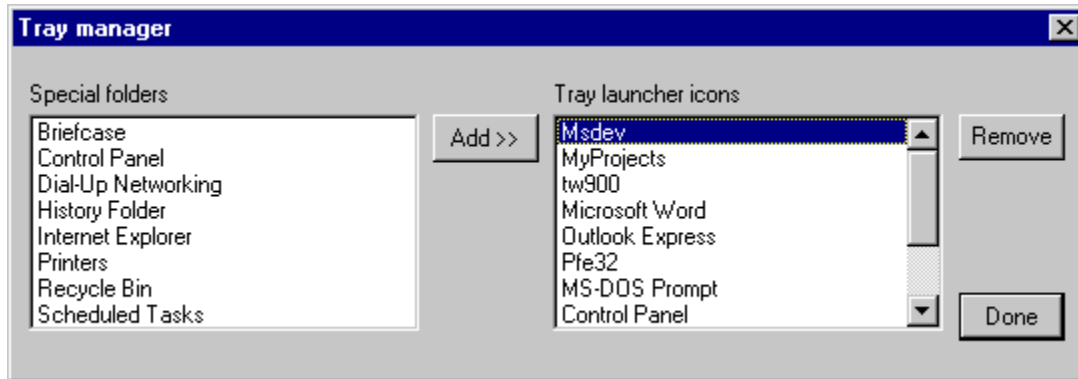
You can change the size of the hot area that activates the screen saver. Make sure you don't make it too large!

Startup delay

If you experience startup problems due to icons referring to network drives, for example, set ClickSave to defer loading the icons.

Tray Manager

The tray manager allows you to delete tray icons, or to add special folders, such as the Control Panel, to your tray. Note that some of the listed folders require you to have the correct software installed, for example the Internet History is only available if you have Internet Explorer.



Command Line Options

Clicksave can be run from a script, from the command line ('Run' in the start menu) or from a shortcut with the following command line parameters:

ClickSave [/switch]

/I Start the screen saver immediately
/S Access the settings dialog
/? Command line help

Buying ClickSave

Registration fee: \$14.95

Only the **unregistered** version of ClickSave may be distributed. This help file is provided only with the registered version, so if you want to show copies to your friends/colleagues, then you must download the distributable version, available at the web site (see contents).

If you would like to register ClickSave, you can do the registration online on the Internet at <http://www.shareit.com/programs/101143.htm>. Alternatively, you can go to <http://www.shareit.com> and enter the program number there: 101143.

If you do not have access to the Internet, you can register via phone, fax or postal mail. Please print out the following form, and fax or mail it to:

Reimold&Schumann Internet Services
ShareIt!
Habsburgerring 3
50674 Koeln
Germany

ShareIt! Inc.
P.O. Box 97841
Pittsburgh, PA 15227-0241
U.S.A.

Phone: +49-221-2407279
Fax: +49-221-2407278
E-Mail: register@shareit.com

1-800-903-4152

[Click here for a form you can print out](#)

Registration form for ClickSave

Program No.: 101143

Last name: _____

First name: _____

Company: _____

Street and #: _____

City, State, postal code: _____

Country: _____

Phone: _____

Fax: _____

E-Mail: _____

How would like to receive the registration key/full version?

e-mail - fax - postal mail

How would you like to pay the registration fee of \$14.95:

credit card - wire transfer - EuroCheque - cash

Credit card information (if applicable)

Credit card: Visa - Eurocard/Mastercard - American Express - Diners Club

Card holder: _____

Card No.: _____

Date of Expiration : _____

Date / Signature _____
